

HAPPY NEW YEAR!

Making A Difference Of Lebanon, PA



JANUARY 2025 NEWSLETTER

SAFETY CARNIVAL

BACK TO SCHOOL FESTIVAL

SUMMER GAMES

HARVEST FESTIVAL

COLLECTION DRIVE

5K RUN/WALK

SCHOLARSHIP CONTEST

COMMUNITY CHRISTMAS MEAL

THEATRE CAMP

DINNER CLUBS

BOOK DRIVE

COMMUNITY CLEAN UP'S

RAFFLES

TRUNK OR TREAT

STEM CAMP

Stay Tuned
**COMING
SOON**
2025

ALSO IN THIS ISSUE:

- President's Corner
- Community Christmas Meal
- Adopt a Family
- Cocoa and Cookies
- Wreaths Across America
- Book Donation Thank You
- Winter STEM Camp
- MLK Remembrance
- Poverty Awareness
- Upcoming Events
- Glaucoma Awareness Information



JANUARY 2025 VOLUME 1



President's Corner

2024 IN REVIEW

We extend our heartfelt gratitude to our Board, Volunteers, Sponsors, and Donors for making this year truly remarkable.

- We kicked our year off with our Annual Retreat.
- We gave out over 1,000- 1,500 books throughout the year.
- We had a Madri Gras Dance with Lebanon Revolution Soccer.
- We had 2 raffle tickets fundraiser and several Dinner Clubs throughout the year.
- We had our second Annual Poetry Contest.
- Taught 3 Stem Camps throughout the year.
- Had our first Annual 5k with our partner Friends of Coleman Memorial Park.
- Had a two-week Theater Camp with our partner St. James Players.
- We had a Back to School Festival, over 800 book bags and supplies were given out.
- We produced a new website and marketing Brochure.
- Our President spoke on behalf of the organization at several meetings and organization lunches.
- Had our annual Collection Drive- We gave out over 45 boxes of supplies to nine organizations, shelters, and school districts.
- We participated in Healthy Kids Day.
- We partnered with Mendoza Group and did 3 promotional Campaigns dealing with Mental Health, Medicaid Insurance and Vaccines.
- We had a Successful Easter Event with our partners Friends of Coleman Memorial Park.
- We supplied books throughout the year to our 6 free Libraries that we partner with the United Way.
- We hosted the 2nd Annual Summer Games Event with our partner Grade A Haul-Away.
- We received Non-profit of the Year from Sweep the Streets.
- We took youth to Camp Rocky Creek for a Kids Day at Camp.
- We showed two community movies and partnered with James Biever Police Community Alliance and the Allen Theater.
- We had a successful Bingo event in July.
- We had our Annual Awards and Appreciation Reception and gave out awards.
- We gave out (3) \$1,000 Scholarship to three Seniors.
- We went to read in a ESL classroom and participated in 2 family Night Outs.
- We partnered with Friends of Coleman Memorial Park for the Harvest Festival.
- We had 2 community clean-ups and participated in the Day of Caring.
- We served 8 families and 22 children in our Adopt a Family for Christmas initiative.
- We sponsored wreaths for Wreaths Across America.
- We partnered with the YMCA for our Annual Trunk or Treat and had approx.. 3,000 people in attendance.
- We partnered with LFHS, St. Lukes Episcopal Church, Chestnut Street Community Center for the 6th Street Block Party.
- We had our second annual Book Drive.
- We donated \$1,000 to the City of Lebanon for improvements to the Veterans Memorial Walkway.
- We had our Annual Holiday Mixer for our volunteers, donors and supporters.
- We served Cocoa and Cookies at the CLA tree lighting and Carriage Rides.
- We served over __ people at our Community Christmas Meal.



2025 Annual Sponsors

Platinum

- Wellspan
- Your Advertiser

Gold

- Chestnut Street Community Center

Silver

- Chrisland Engineering
- Lebanon Federal Credit Union
- UPMC in Central Pa and UPMC Health Plan

Bronze

- FCCB
- Union Community Care
- Albertine Washington
- Boogaard Family
- Jonestown Bank & Trust

Patron

- Fulton Bank
- Ensminger Insurance
- Bamberger's Inc.
- Time to Think LLC.
- The Lion's Mane
- Kevin & Maine Keith

Friend

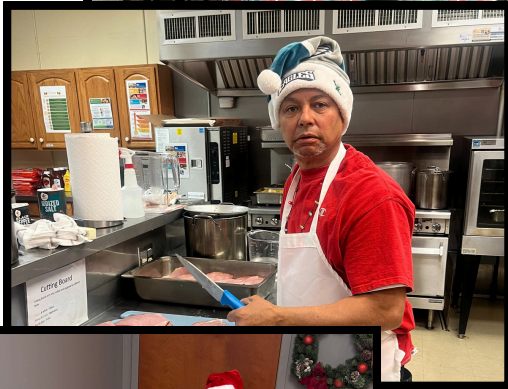
- Allstate – Tim McShane





JANUARY 2025 VOLUME 1

Community Christmas Meal



Our community Christmas Meal was a tremendous success, with over 160 meals served. A sincere thank you to everyone who gathered with us for a warm meal on Christmas Day, as well as to all the volunteers, supporters, and LCCM who made this event possible. Your kindness and generosity brought joy to countless individuals. We are incredibly grateful for this amazing community and your steadfast support.





Adopt-A-Family



We would like to extend our heartfelt thanks to everyone who played a role in making this weekend's Adopt-A-Family event a resounding success. Whether you volunteered your time, donated items, or assisted with organization and coordination, your contributions brought joy and hope to families in need. It is the kindness of individuals like you that allowed us to create a truly meaningful holiday experience for so many.



Cocoa and Cookies

This year, we proudly offered cocoa and cookies for the first time during the CLA Carriage Rides. Although the weather was quite chilly, we persevered to serve warm beverages and cookies to the carriage riders. A heartfelt thank you to all the donors and volunteers who contributed to making this event a tremendous success.



Wreaths Across America Donation



We were excited to donate wreaths for Wreaths Across America. We are also glad our wreaths were placed at Ft Indiantown Gap National Cemetery. Thanks to our friends at Grade A Haul-Away for sending us the pictures and donating their time to help place wreaths.

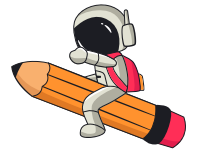
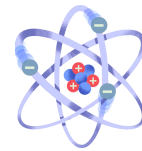




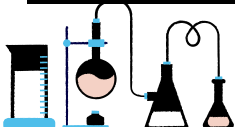
Book Donation Thank You!!

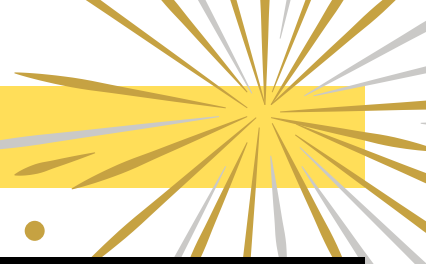
We extend our heartfelt gratitude to the Women of ELCA from Holy Trinity Church for visiting our office and generously donating books. Your support means a great deal to us.

How to Catch an Elf STEM Camp



How to Catch an Elf STEM adventure was filled with team challenges and coding with robots that showed how creativity, collaboration, curiosity, and communication work together. These great minds built Christmas trees, paper bridges, and parachute drops. But the final activity was to build a Rube Goldberg machine to catch an elf. To celebrate the success achieved, we fed our minds with Angelo's pizza.





Martin Luther King Jr. Day



Martin Luther King Jr. Day (officially Birthday of Martin Luther King Jr., and often referred to shorthand as MLK Day) is a federal holiday in the United States observed on the third Monday of January each year. King was chief spokesperson for nonviolent activism in the Civil Rights Movement, which protested racial discrimination in federal and state law and civil society. The movement led to several groundbreaking legislative reforms in the United States.

National Day of Service

The national "Martin Luther King, Jr., National Day of Service" was started by former Pennsylvania U.S. Senator Harris Wofford and Atlanta Congressman John Lewis, who co-authored the King Holiday and Service Act. The federal legislation challenges Americans to transform the King Holiday into a day of citizen action volunteer service in honor of King. The federal legislation was signed into law by President Bill Clinton on August 23, 1994. Since 1996, Wofford's former state office director, Todd Bernstein, has been directing the annual Greater Philadelphia King Day of Service, the largest event in the nation honoring King.

Since 1994, the day of service has been coordinated nationally by AmeriCorps, a federal agency, which provides grants to organizations that coordinate service activities on MLK Day.

The only other official national day of service in the U.S., as designated by the government, is September 11 National Day of Service (9/11 Day)





Poverty Awareness Month

Poverty Awareness Month is observed annually in January to raise awareness about poverty and how to help. It's a time to:

- Educate ourselves about poverty
- Learn how to help limit poverty
- Reflect on the challenges faced by people living in poverty
- Pray for those experiencing poverty
- Identify actions we can take to help

Some ways to get involved include: Advocacy, Volunteerism, Donations, Learning about programs and services from organizations in your area, and Following organizations on social media to learn how to get involved.

Some factors that can contribute to poverty include: limited access to education, disabilities, and social discrimination.

In 2022, 11.5% of Americans, or 37.9 million people, lived in poverty. Poverty is a serious issue worldwide.

Community Resources

211

Pa211.org

Call "211"

Text your zipcode to 898-211

**Connect with entire
directory of resources in
your community**

Agape Family Shelter

(717) 272-6573

139 S. 9th St., Lebanon

Shelter for women and children

FRESH Start Emergency Shelter & Resource Center

(717) 272-4400

611 Chestnut St., Lebanon

Emergency shelter for families
and individuals

LCCM - Market on 7th

(717) 272-4400

250 S 7th St., Lebanon

Mondays: 12-3pm

Tuesdays: 10am-1pm

Wednesdays: 10am-1pm

Thursdays: 4-7pm

LCCM - Noon Meal

(717) 272-4400

250 S 7th St., Lebanon

12-1pm Monday-Friday

Weekend Schedule:

lccm.us/noon-meals

Lebanon County

Assistance Office

(717) 270-3600

625 South 8th Street, Lebanon

Food stamps and other
governmental services



Upcoming Organization Events

DINNER CLUB FUNDRAISER x x x x

Support Making A Difference Of Lebanon, PA

ANGELO'S
FRATELLO E SORELLA
EST. 2022

**WEDNESDAY,
FEBRUARY 26, 2025
10:30 AM TO 8:00 PM**

Angelo's
Fratello E Sorella
1032 S 5th Ave
Lebanon, PA
(717) 273-8579

Dine with us on this night and we will donate 15% on all non alcohol purchases to the organization!

SAVE THE DATE
COLEMAN'S PARK
5K FUN RUN & WALK
2025

Saturday, April 19, 2025

MAKING A DIFFERENCE OF LEBANON, PA COLEMAN MEMORIAL PARK

MAKING A DIFFERENCE OF LEBANON, PA
SAVE THE DATE
SAFETY CARNIVAL

JUNE 28, 2025
4:00-8:00pm

**MOVIE IN THE PARK
KUNG FU PANDA**
8:15-10:00pm

COLEMAN MEMORIAL PARK
1400 MAPLE ST., LEBANON

POLICE DEPARTMENT FIRE DEPARTMENT

MAKING A DIFFERENCE OF LEBANON, PA

Want to know more?

Explore our website or Facebook page to stay updated on all the latest news, events, and activities happening within our organization!

<http://>



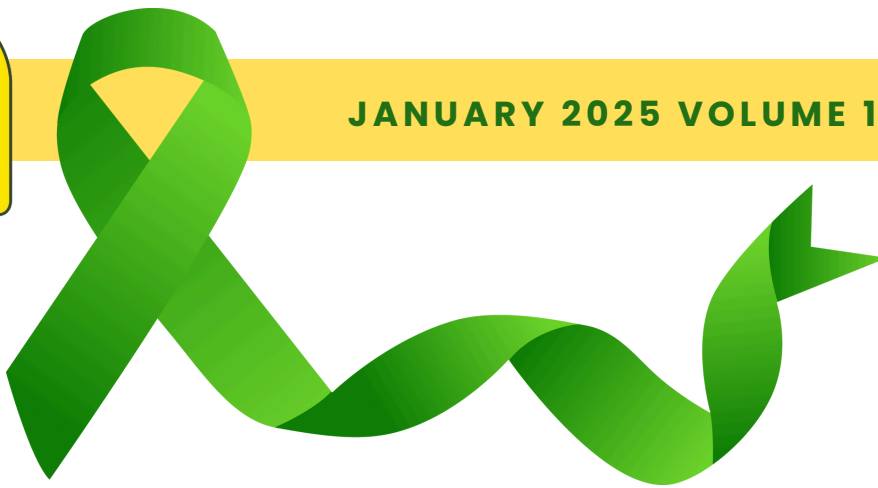
MAKINGADIFFERENCEOFLEBANONPA.ORG



DiffofLebanon



JANUARY 2025 VOLUME 1



January is National Glaucoma Awareness Month, an important time to spread the word about this sight-stealing disease. The Glaucoma Research Foundation works to promote eye health and research glaucoma. Glaucoma is the leading cause of irreversible blindness. Currently, more than 3 million people in the United States have glaucoma. Combined with our aging population, we can see an epidemic of blindness looming if we don't raise awareness about the importance of regular eye examinations to preserve vision.

Managing glaucoma during pregnancy requires careful planning and collaboration with healthcare providers.

GLAUCOMA
RESEARCH FOUNDATION



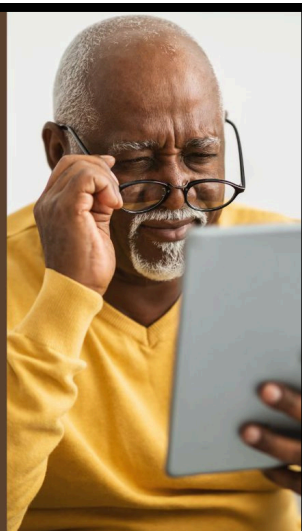
The future of glaucoma research holds immense promise. With each discovery we move closer to achieving more effective treatments and, ultimately, a cure for glaucoma.

GLAUCOMA
RESEARCH FOUNDATION



A recent study sheds light on the prevalence of glaucoma in the U.S. and how it affects people across different regions, races, and age groups.

GLAUCOMA
RESEARCH FOUNDATION



Diabetes and glaucoma are two common health conditions affecting millions of people worldwide. Both can significantly impact an individual's quality of life.

GLAUCOMA
RESEARCH FOUNDATION





2025 Board of Directors

Cornell Wilson
Sommer VanBrunt
Alisher Aminov
Paige Rivera-Fansler
Francy Reigert

Keith Pemrick
Cindy Schlegel
Rafael Arvelo-Castillo
Mario Nardone
Gregory Fry

Office:

11 N 9th St
Lebanon, PA 17046
717-769-0533

Mailing:

PO Box 1425
Lebanon, PA 17042

Stay connected with us for the most recent news and updates.



makingadifferenceoflebanonpa.org

facebook

DiffofLebanon



Instagram

DiffofLebanon